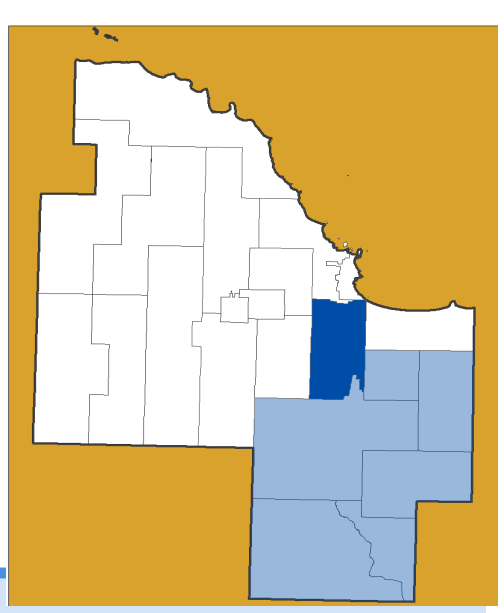
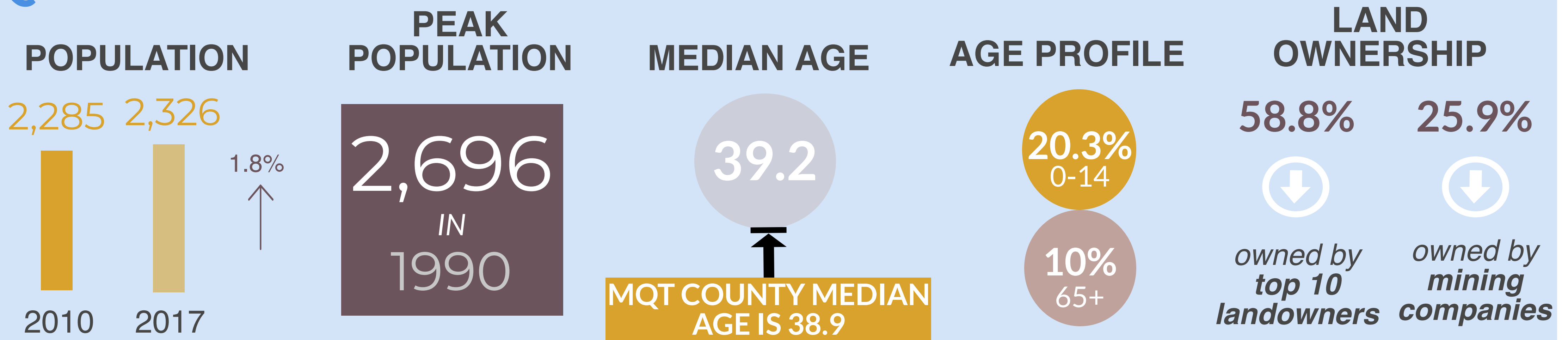


# SANDS TOWNSHIP

Planning Region: Blueberry Farms



## Quick Facts

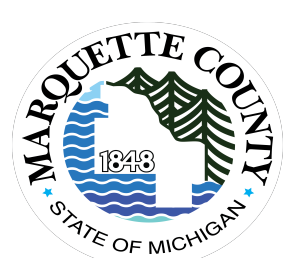
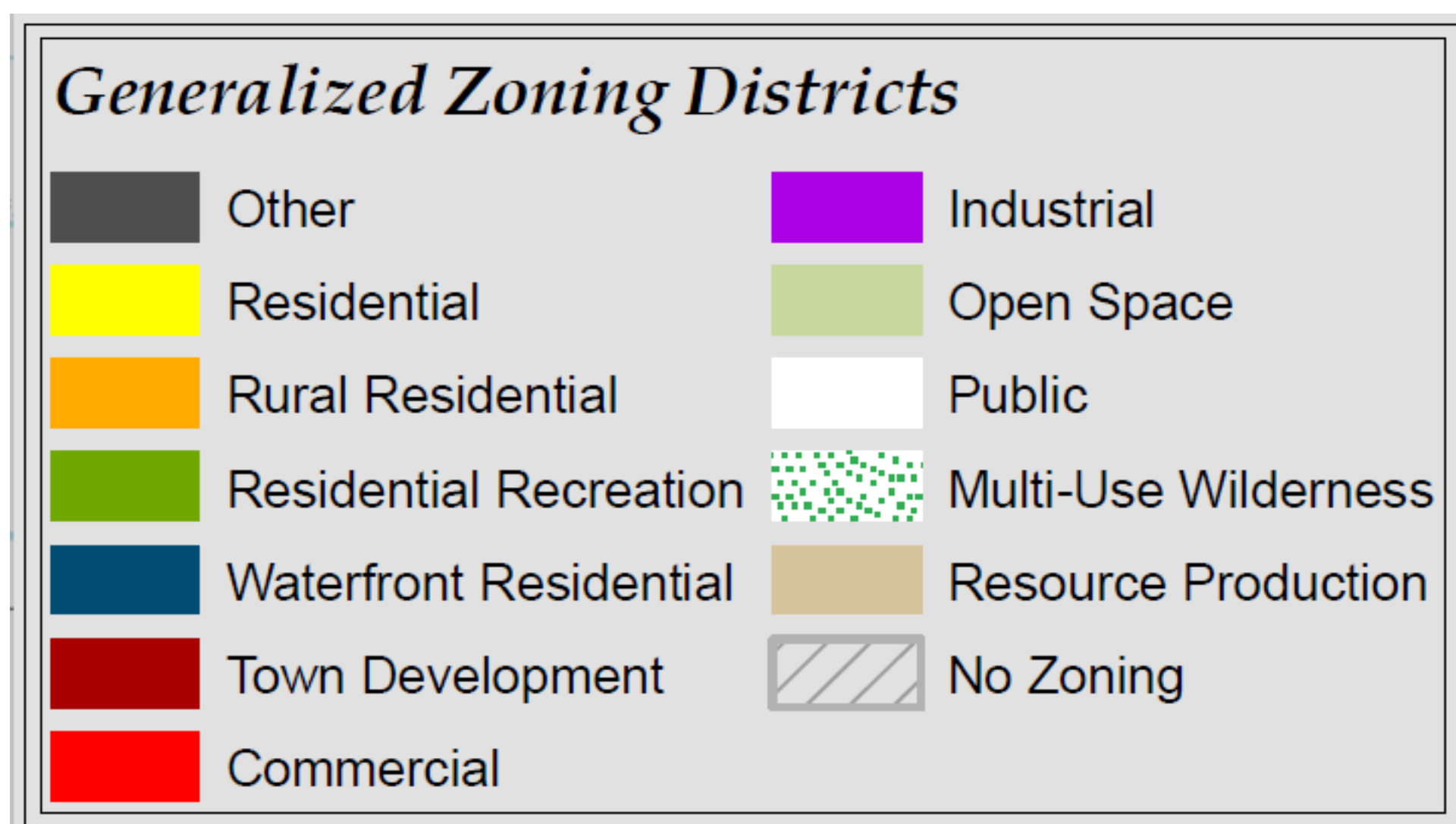
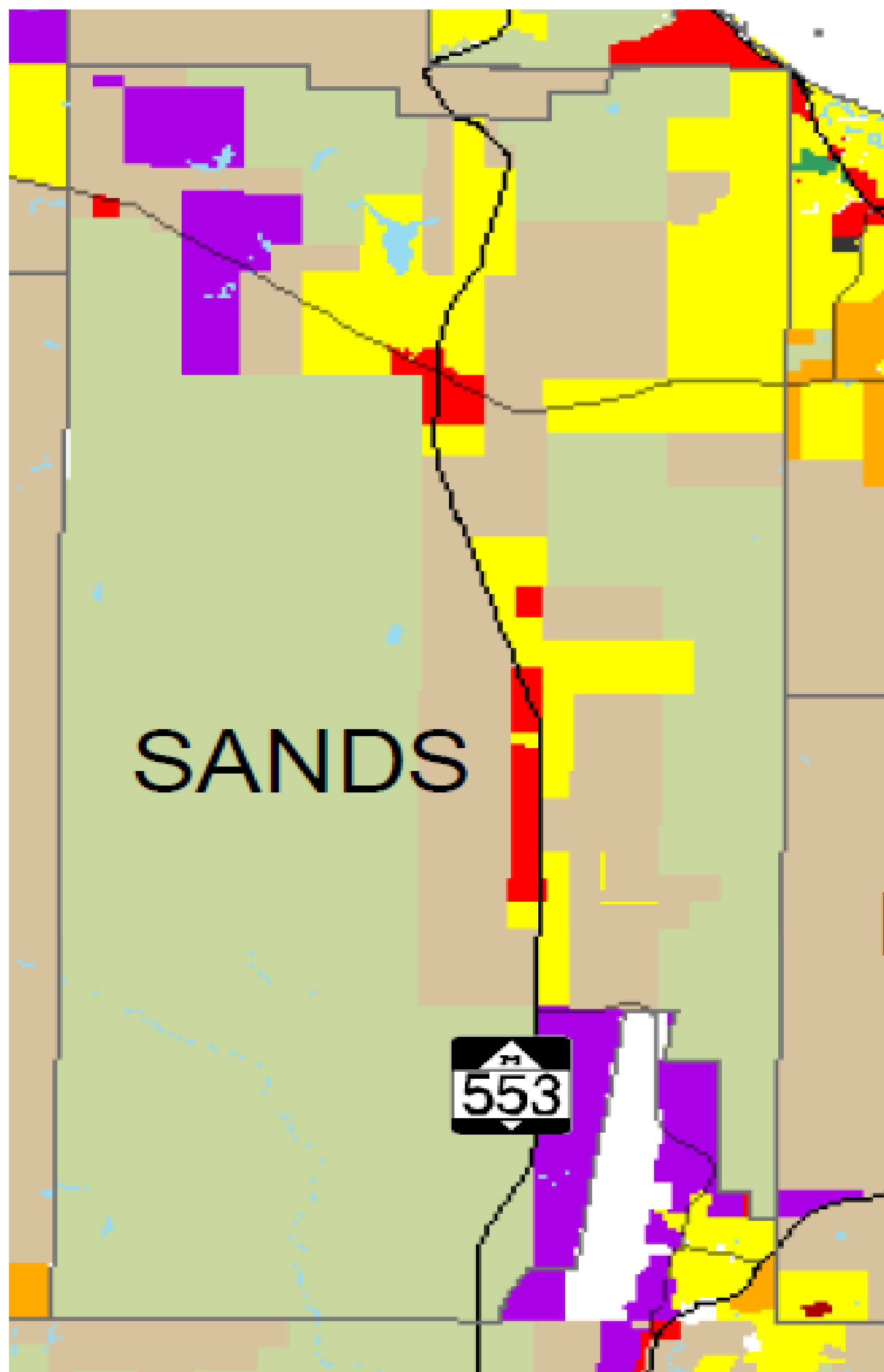


### PORTION OF COUNTY TOTAL

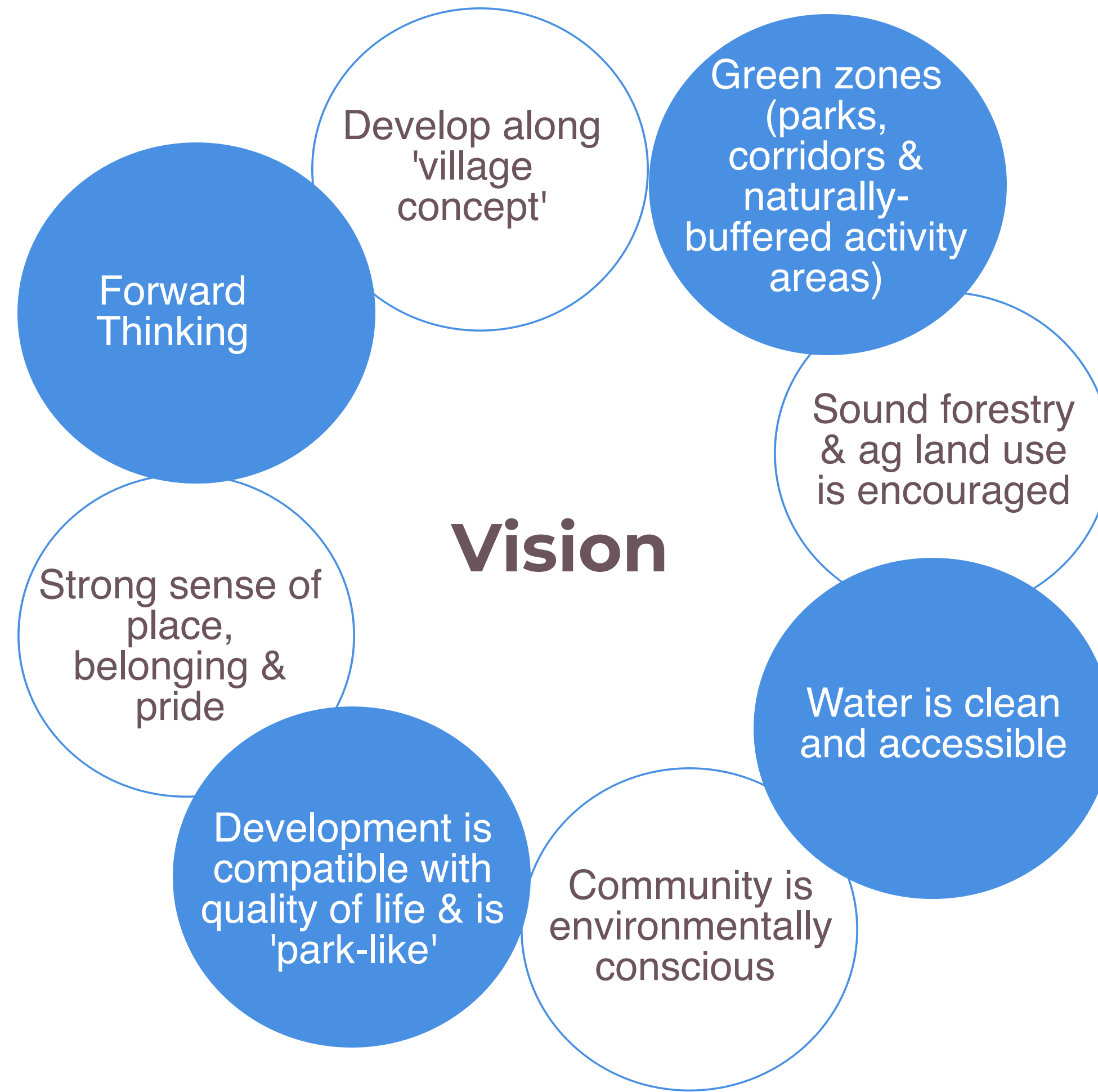
3.5%  
POPULATION

3.7%  
LAND AREA

3.2%  
LAND VALUE



# Master Plan Summary (2011)



## Goals

- 1 **Balanced Growth**  
Strive to preserve the quality of life, scenic beauty, foster wise use of natural resources, protect areas of concern, & enhance the special, low intensity character
- 2 **Housing/Residential**  
Encourage variety of types in a wide range of prices; meet housing needs without straining capacity of local governments; fits scenic, rural character; new residential enhances existing settlement areas & is compatible with historic sites
- 3 **Commercial/Business**  
Encourage in appropriate locations which serve current & future needs, are consistent with community design, & which promote public safety through prevention of traffic hazards & other threats
- 4 **Industrial**  
Encourage non-polluting, light industry without damaging the environment, adversely impacting the aquifer, spoiling scenic beauty, or overburdening local roads, utilities, or other public/private facilities.
- 5 **Transportation**  
Provide for safe & efficient movement of people & goods with a balanced network at minimal environmental & fiscal cost; coordinate improvement of network with overall development
- 6 **Economy**  
Provide an environment within which a diverse & stable economic base may be development
- 7 **Natural Features**  
Preserve & enhance the natural environment by utilizing natural resources in an orderly & prudent manner
- 8 **Community Facilities**  
Provide public facilities & services as requested by residents & at the best value for expenditures
- 9 **Recreation**  
Enhance well-being by providing a variety of opportunities for relaxation & education through a well-balanced system of private & public park & recreational facilities & activities located to serve identified needs of the area
- 10 **Community Character**  
Retain & enhance the quiet, scenic & small-town/rural character; preserve established character of neighborhoods

