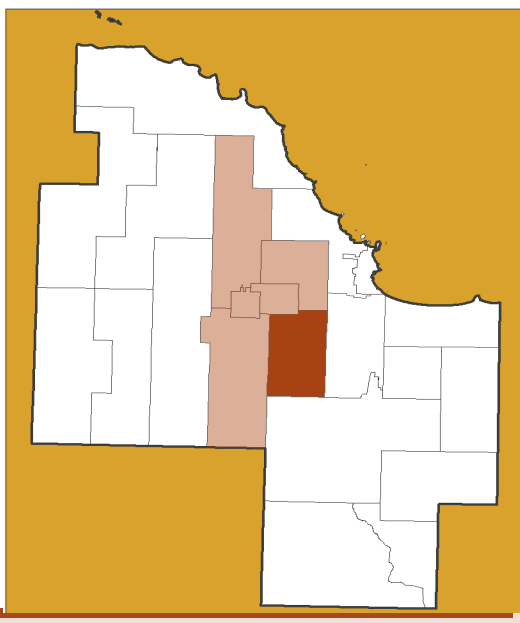


# RICHMOND TOWNSHIP

Planning Region: Iron Core



## Quick Facts

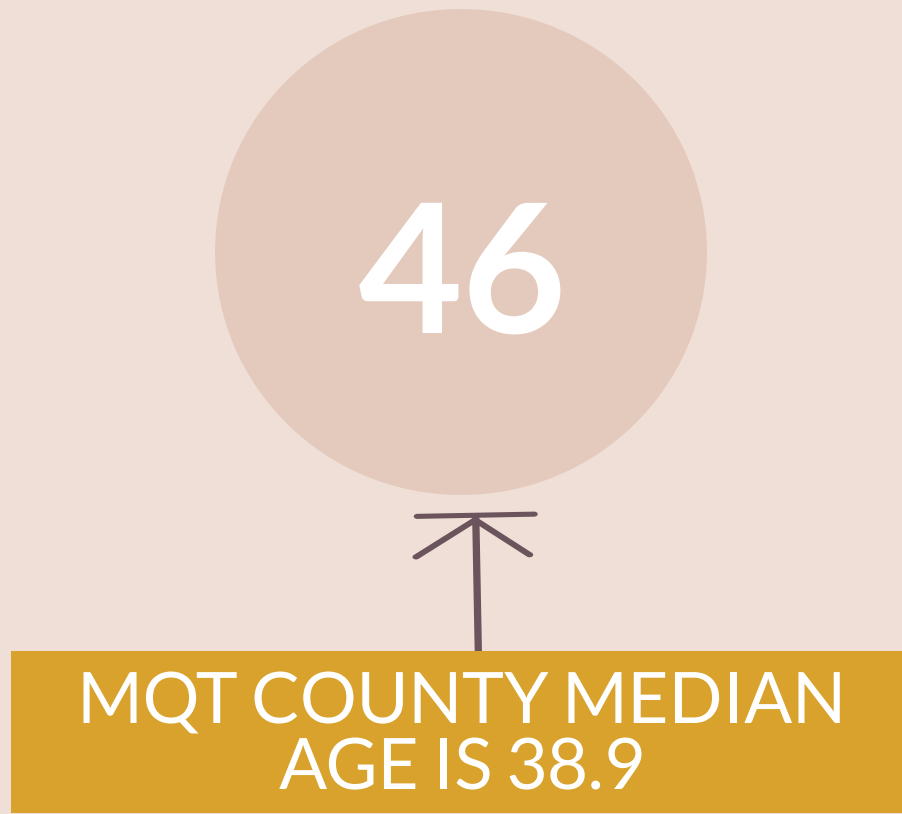
### POPULATION



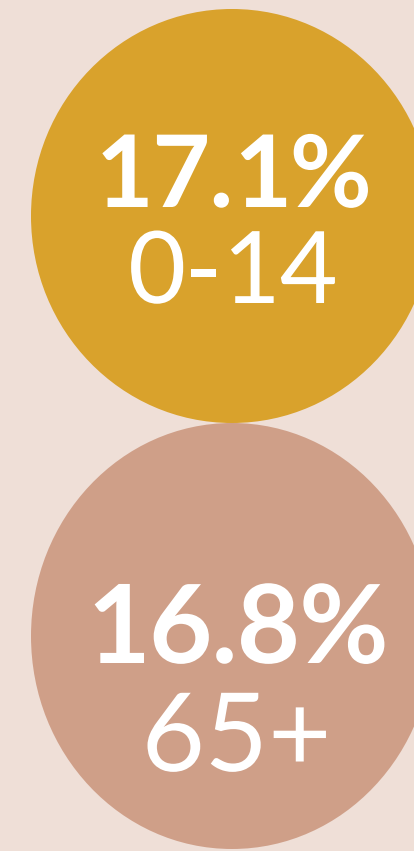
### PEAK POPULATION



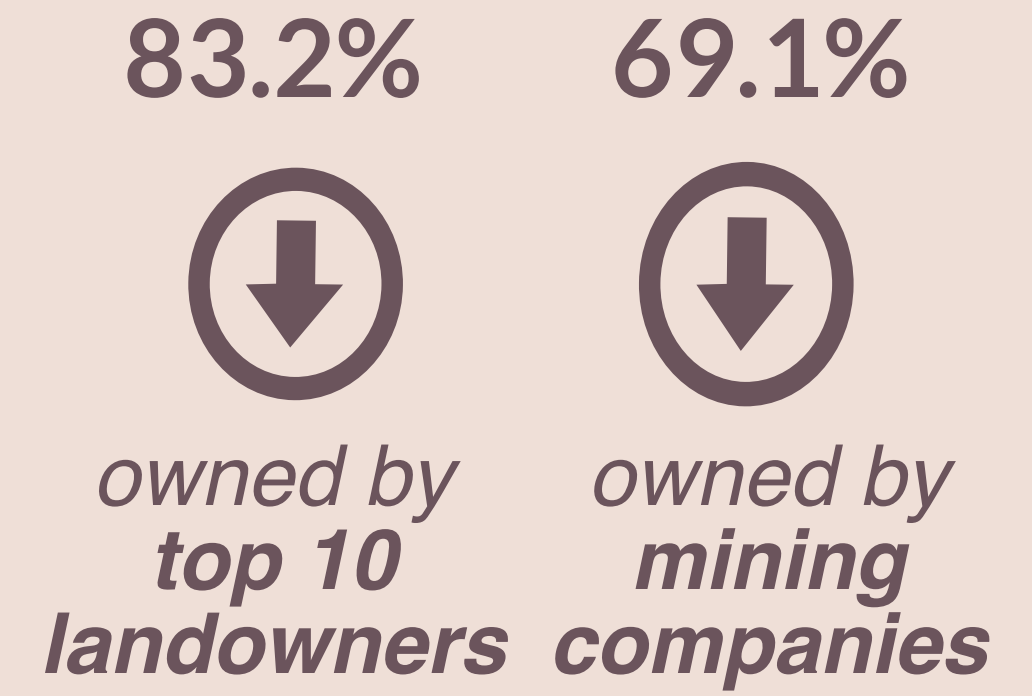
### MEDIAN AGE



### AGE PROFILE



### LAND OWNERSHIP



PORTION OF COUNTY TOTAL

**1.3%**

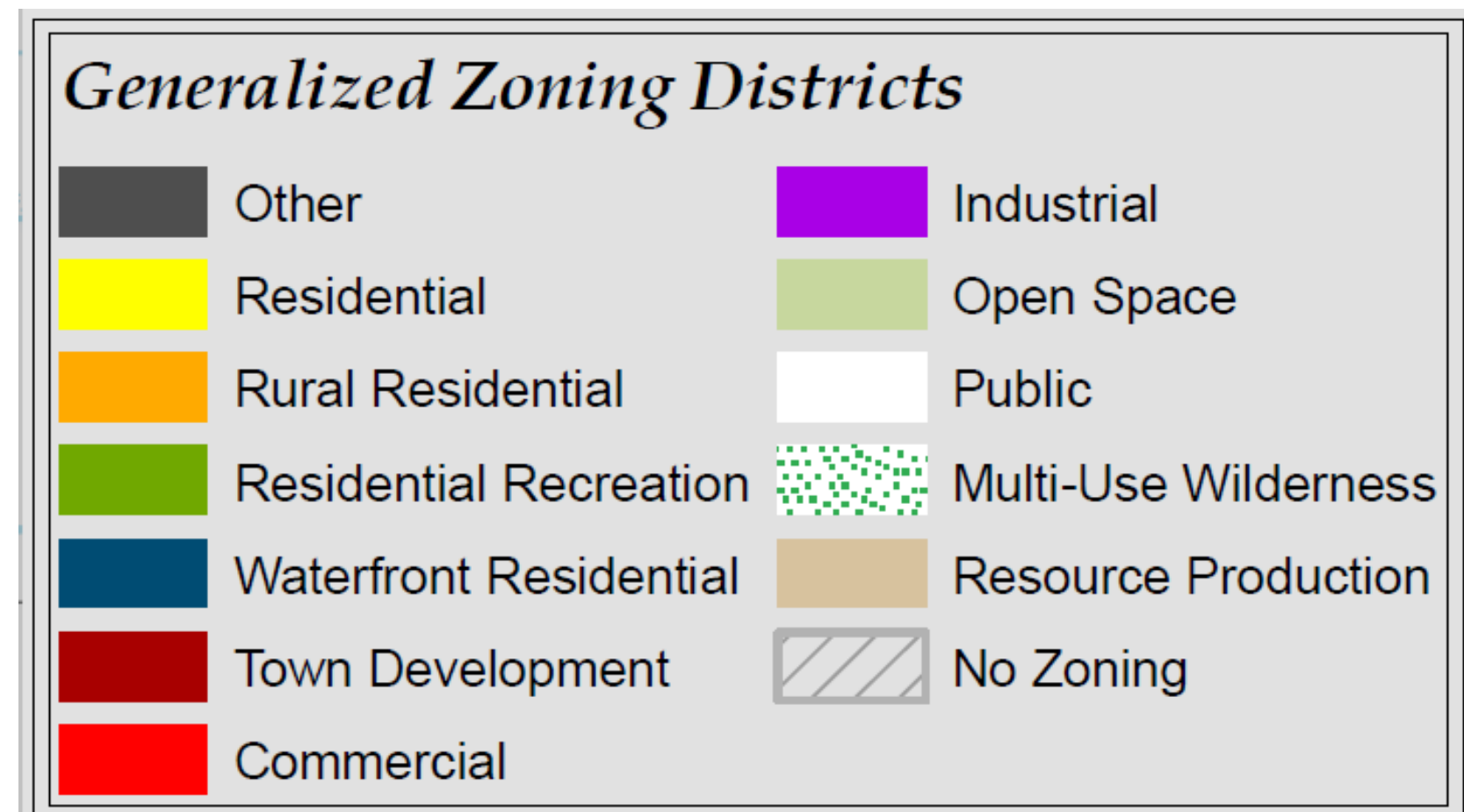
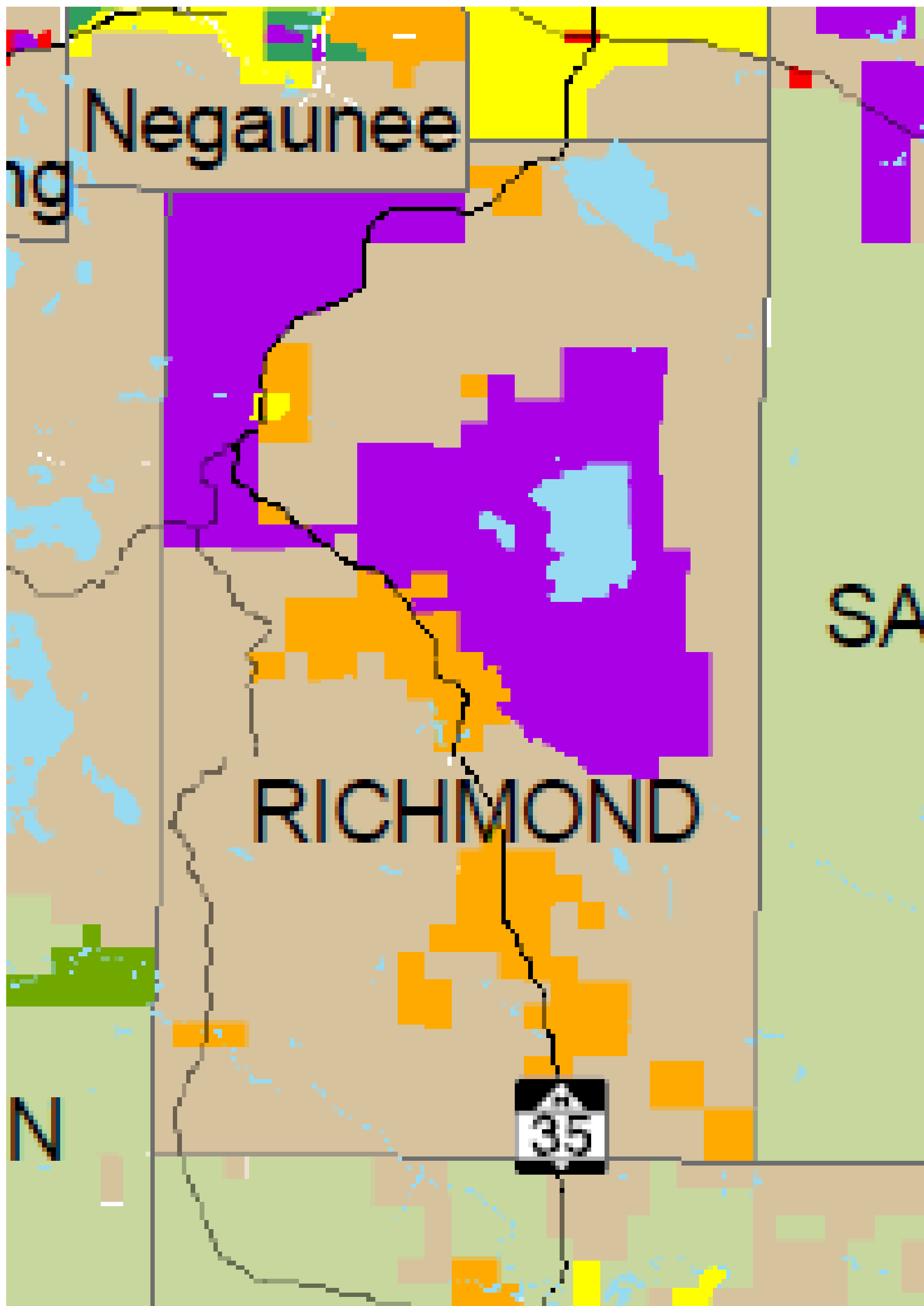
POPULATION

**3.1%**

LAND AREA

**0.9%**

LAND VALUE



# Master Plan Summary, 2011

86% of housing stock is single-family, indicating a need to diversify

Develop a varied housing stock that meets the needs, preferences and financial capabilities of a diversified population

## Housing

Concentrated in Palmer, which has municipal water & sewer services

Population is declining, with half of the population living in Palmer

"...to retain population density in the Township and surrounding areas"

## Population

Increasing number of people living alone

Population is aging; Over half of population over 65 have a disability

Preserve & enhance the natural setting of the Township, while allowing for compatible development to occur at suitable sites

## Natural Features

Stability of land around mining sites limits development

Based entirely on mining; complete closure would have serious consequences

Improve the existing conditions base in the Township and make an effort to attract new businesses

## Economy

Lack of available land for commercial development, available utilities, business viability

Provide a safe, well maintained and efficient multi-modal transportation network

## Transportation

Outside Palmer, road conditions are poor

Township has millage for roads

Dust control

Recreation areas have been developed with the help of Cliffs

Maintain and improve recreational opportunities for residents of all ages

## Recreation

Need for trail development

Provide, maintain & improve the quality & efficiency of community facilities & services in a cost-effective manner

## Community Facilities & Services

Township Hall is in good condition

Updated municipal water system

Library

No recycling

*"Ongoing reclamation of the Empire Mine and it's future completion will establish a visible impression for future generations"*